

INSTRUMENT APPROACH
 APPROACH
 ICAO

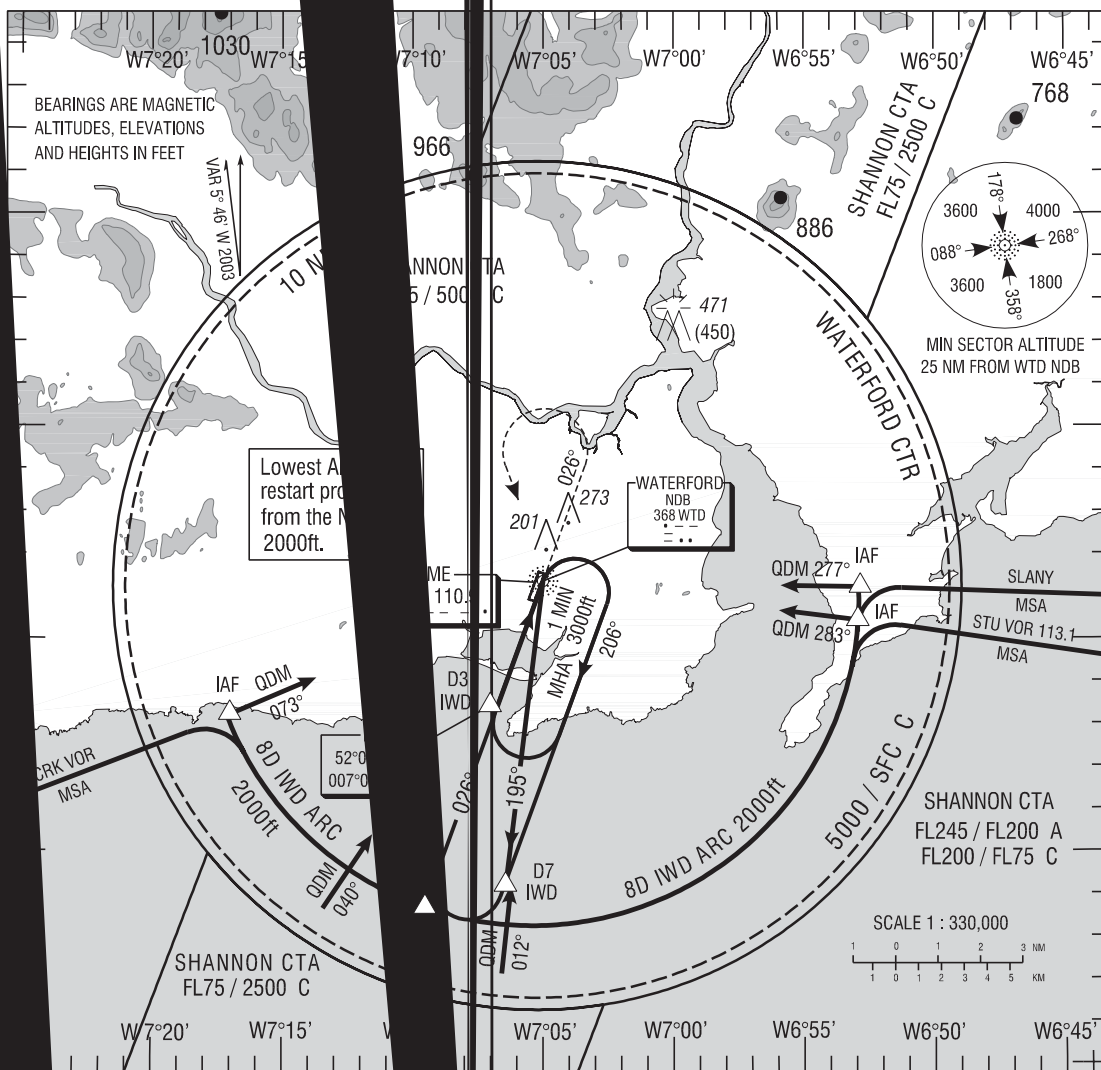
AERODROME
 HEIGHTS RELATIVE TO SEA LEVEL
 RWY 03 - ELEVATION

Tower 129.85
 ATIS 121.15
 Shannon 124.7

CONSULT NOTAM
 FOR LATEST
 INFORMATION

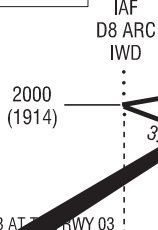
WATERFORD / WATERFORD
 NDB/DME RWY 03
 (ACFT CAT A, B)

PROCEDURE NOT AVAILABLE WITHOUT DME

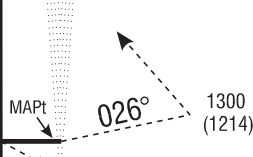


Mapping based on Ordnance Survey Ireland by Permission of the Government © Government of Ireland Permit Number 7109

TRANSITION
 ALTITUDE 5000 ft



IAF/MAPT
 WTD NDB



MISSED APPROACH: At or before
 MAPt climb straight ahead. At 1300
 (1214)ft or 3 DME IWD whichever is
 later climbing left turn to return
 to WTD NDB at 2000(1914)ft,
 or as directed.

10 9 8 7 6 5 4 3 2 1 2 3 4 5 6 7 8 9 10 11 12 13

OCA (H)

B

Approach

450 (364)

Instrument
 approaches only available
 within the Traffic Control Zone

Recommended profile on Final Approach
 Descent Rate 5.0% (2.8°), 30ft / NM

DME	3 DME	2 DME	1 DME
Alt/Ht	950 (864)	650 (564)	350 (264)