



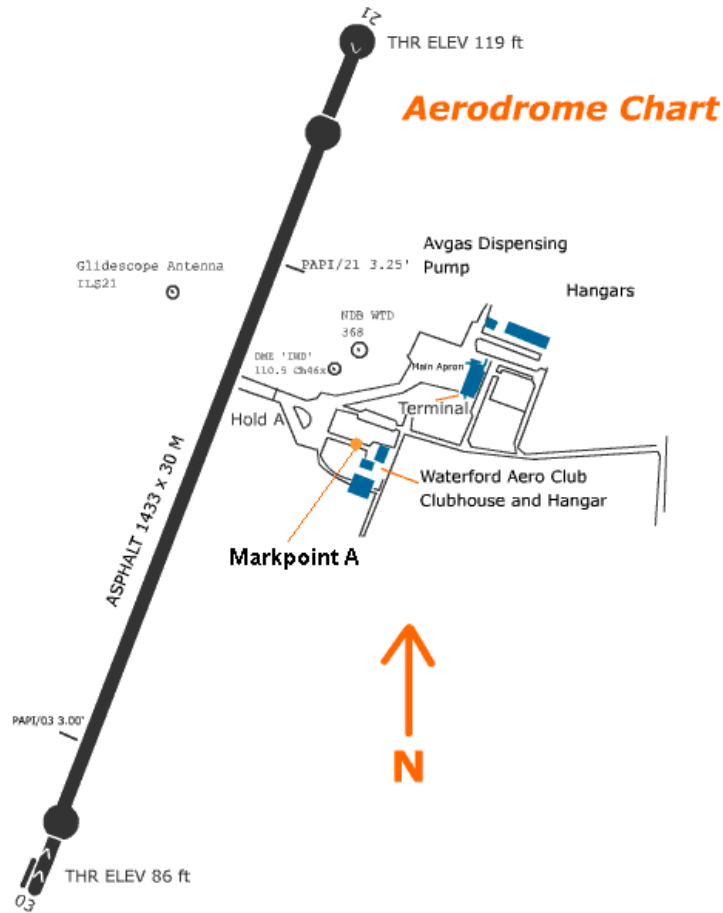
### Annual Fly-In 17/07/2010

#### Intro:

Thank you for taking the time to participate in Waterford Aero Clubs 4<sup>th</sup> Annual BBQ. Waterford Aero Club, established over 25 years ago is the oldest training facility in the south of Ireland with the most modern fleet of "Green" aircraft.

#### Departing Checklist:

- Please Bring tie downs with you.
- All attending must fill out the registration page and File a flight plan with Shannon AIS.
- If you are ***arriving internally*** from Ireland, you must a) fill out the registration page and b) File and Flight Plan, you should also contact Waterford Airport on 051-875589 to obtain PPR.
- If you are ***externally arriving*** from outside Ireland, you must a) fill out the registration page, b) File a flight plan and c) Contact the airport for PPR and customs arrangement.
- Be Familiar with Waterford Airports Visual Approach Chart that is available in this Package.
- Be Familiar with the ground chart below for Waterford Airport.
- When arriving, call for taxi to the club and follow the guidance of the marshaller, please don't taxi onto the grass, shut down on the concrete ramp where the yellow circle is.
- If you require fuel, please get it when you arrive as avgas will be readily available, getting fuel before you depart will interfere with airport operations and may cause you a delay. You will have to taxi to the airport to get it.
- When filing flight plans, please use clear block capitals or use the computer version.
- Call 5 Minutes BEFORE Entering the Waterford CTR Zone, entering controlled airspace without permission is a violation of Irish law.



Registering:

Please register online @ [www.waterfordaeroclub.com](http://www.waterfordaeroclub.com)

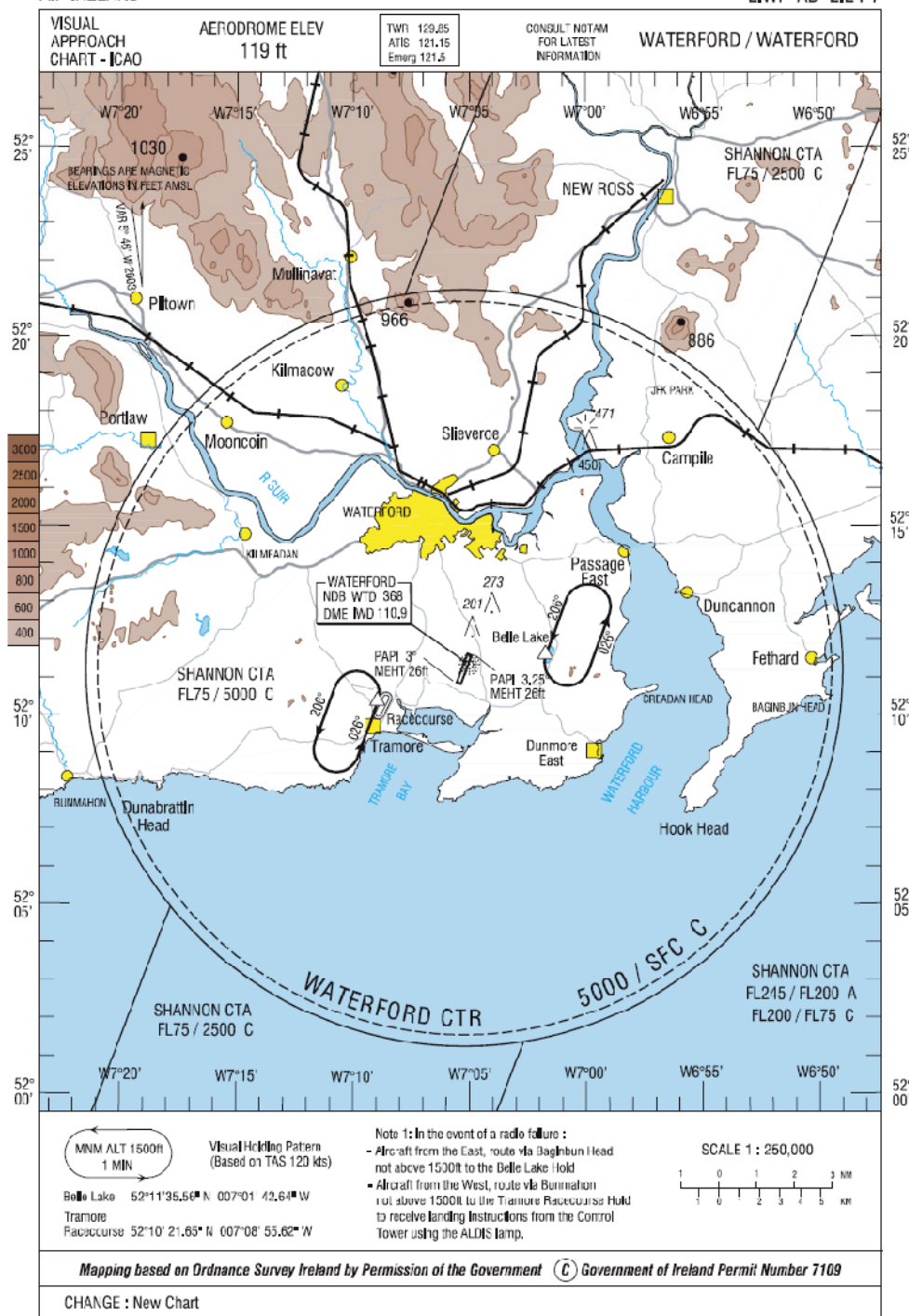
Other Info:

- The BBQ will be lighting at 11am but you can arrive in the due course of the day
- As like last year, camping is permitted beside your aircraft.
- Waterford Airport have waived the landing fees again this year.
- As per notam, Waterford Airport is closed for movements after 1945zulu time (2045 local), no traffic will be permitted after these times.

# Visual Approach Chart for Waterford

AIP IRELAND

EIWF AD 2.24-7



Irish Aviation Authority

AERONAUTICAL INFORMATION 30 OCT 03

## Accommodation List Summer Fly-In 2009

### Hostel

<b><i>Beach Haven Hostel</i></b>	Tramore, Co. Waterford +353 (0)51 390208 <a href="http://www.beachhavenhouse.com">www.beachhavenhouse.com</a>
5km from Airport From €18pp	Family-run hostel situated in Tramore, within very easy reach from Waterford Airport. Dormitory-style accommodation with Wi-Fi, self-catering facilities, and free parking available. B&B and apartments also available.

### Bed & Breakfasts

<b><i>Glor na Mara</i></b>	Kilmacleague, Dunmore East, Co Waterford. +353 (0)51 383361 <a href="mailto:peggysutton@eircom.net">peggysutton@eircom.net</a>
3km from airport	Modern family house in tranquil, rural setting. Located in extremely close proximity to the airport, Tramore, Dunmore East and Waterford City.

<b><i>Brook Villa</i></b>	Pickardstown, Tramore, Co Waterford. +353 (0)51 386158
5km from Airport	Ensuite rooms with tea/coffee making facilities, very close to the airport and Waterford City.

<b><i>Avanti B&amp;B</i></b>	Pickardstown, Tramore, Co Waterford. +353 (0)51 381671 <a href="http://www.avantitramore.com">www.avantitramore.com</a>
5km from airport suite From €35pps making	Relaxed and warm atmosphere with tastefully decorated en-suite bedrooms, complete with T.V, hairdryers and tea/coffee facilities. Private parking.

<b><i>Norlands B&amp;B</i></b>	Glen Road, Tramore, Co Waterford. +353 (0)51 391132 <a href="http://www.norlands.ie">www.norlands.ie</a>
6km from airport From €32pps  Airport.	Situated beside the Racecourse in Tramore. Modern bungalow decorated to the highest standard. Selection of Restaurants and Pubs nearby. Families welcome. 10 min from Waterford

<b>Tír na Nóg</b>	Dock Road, Dunmore East, Co Waterford. +353 (0)51 383580 <a href="mailto:tiranog.dunmoreeast@gmail.com">tiranog.dunmoreeast@gmail.com</a>
8km from airport	A comfortable ambience and is located in the centre of Dunmore, close to the airport. Within walking distance of all amenities, it is the perfect base for one to explore the beauty of Dunmore.

<b>Beach Guest House</b>	Lower Village, Dunmore East, Co Waterford. +353 (0)51 383316 <a href="mailto:beachhouse@eircom.net">beachhouse@eircom.net</a>
8km from Airport From €50	Ensuite bedrooms with tea/coffee making facilities, breakfast included, situated in the scenic fishing village of Dunmore East, within easy driving distance of Waterford Airport.

<b>Dunroven B&amp;B</b>	Ballinaneesagh, Cork Road, Waterford. +353 (0)51 374743 <a href="http://dunroven-ireland.com">http://dunroven-ireland.com</a>
10km from Airport	Dunroven is a modern house on main Waterford/Cork Rd N25, convenient to Waterford Crystal, airport, regional college and sports centre. Express buses to Dublin/Cork 5 min walk from Dunroven, private parking available.

<b>Hazelbrook</b>	No 10 The Vee, Cork Road, Waterford. +353 (0)51 379815 <a href="http://www.hazelbrook.ie/bnb.htm">http://www.hazelbrook.ie/bnb.htm</a>
10km from Airport From €40pps	Hazelbrook Bed&Breakfast has 6 bright, spacious and exclusive guestrooms. All of these rooms are en-suite and non-smoking with cable television and tea/coffee making facilities.

#### Hotels & Guesthouses

<b>Ramada Hotel</b>	Butlerstown Roundabout, Cork Road, Waterford. +353 (0)51 336933 <a href="http://www.ramadavikinghotel.ie">http://www.ramadavikinghotel.ie</a>
9km from Airport	Modern hotel in Waterford City, offering ensuite accommodation, free Wi-Fi, satellite tv, parking, with bar and restaurant.

<b>Marina Hotel</b>	Canada Street, Waterford City. +353 (0)51 856600 <a href="http://www.waterfordmarinahotel.com">www.waterfordmarinahotel.com</a>
10km from Airport From €59	Three star accommodation, centrally located in Waterford City, and easily accessible from all locations. Hotel offers ensuite bedrooms, parking, satellite tv and has it own restaurant and bar.

<b>Fitzwilton Hotel</b>	Bridge Street, Waterford City. +353 (0)51 878650 <a href="http://www.fitzwiltonhotel.ie">www.fitzwiltonhotel.ie</a>
11km from Airport From €29 pps	The Fitzwilton 4 star hotel boasts luxury accommodation in Waterford City with bedrooms contemporary in style, offering stunning views across Waterford's cityscape and the river Suir.

<b>Woodlands Hotel</b>	Dunmore Road, Waterford. +353(0)51 304575 <a href="http://www.woodlandshotel.ie">www.woodlandshotel.ie</a>
8km from Airport	Woodlands Hotel Waterford offers extensive accommodation in family rooms, executive rooms and a four poster bedroom. One of the more popular Waterford Hotels, the

<b>Travelodge</b>	Woodlands has free car parking and use of Woodlands Health & Leisure Club. Cork Road, Waterford City. +353 (0)51 358885 <a href="http://www.travelodge.ie">http://www.travelodge.ie</a>
10km from Airport	Ideally located opposite the Waterford Crystal visitor centre in the
From €29	heart of Waterford's busy commercial district. Hotel is located on the main Cork to Rosslare Road (N25), with easy access to the Airport.

<b>Majestic Hotel</b>	Tramore, Co Waterford. +353 (0)51 381761 <a href="http://www.majestic-hotel.ie">www.majestic-hotel.ie</a>
6km from Airport	Excellently located in Tramore, within minutes of the beach, amusement park, Slashworld swimming pools, and within easy reach of the Airport. Three star accommodation, ensuite rooms, parking, satellite tv etc.
From €80	

<b>Portree House</b>	Mary Street, Waterford City. +353 (0)51 874574 <a href="http://www.portreeguesthouse.ie">www.portreeguesthouse.ie</a>
11km from Airport	This elegant period guesthouse has been lovingly maintained and
From €35pppn	elegantly furnished with the highest quality modern conveniences. The decor is restful and warm, while the rooms are spacious and extremely comfortable.

<b>Rice Guesthouse</b>	35/36 Barrack Street, Waterford. +353 (0)51 371606 <a href="http://www.riceguesthouse.com">www.riceguesthouse.com</a>
10km from Airport	A warm welcome awaits you at Rice Guesthouse, which is owned
From €40	and run by the FitzGerald Family. Ideally situated just 2 minutes walk from Waterfords City Centre, Rice Guesthouse offers it's guests a superb location, within easy access to the Airport and City Centre.

<b>St Albans</b>	Cork Road, Waterford City. +353 (0)51 358171 <a href="http://www.stalbansbandb.com">www.stalbansbandb.com</a>
10km from Airport	St. Albans is a well established family run guesthouse ideally located minutes walk from Waterford city centre and Waterford Crystal, and close to Waterford Airport.
From €40	

### Taxi Firms

Rapid Cabs: 051-877777  
 Deise Cabs: 051-820500  
 City & County Cabs: 051-877710  
 Cara Cabs: 051-353535

The Competitions:

Best ETA;

You have to enter an ETA on the registration page and try to land on the same time as the ETA. If you do you will a fantastic prize of a 1 Hour Sim Session in a Boeing 737-800 Sim

Aviation Table Quiz;

There will be an aviation table quiz on the night where each individual will enter and there will be a number of questions asked. The winner will win a One Hour Boeing 737-800 Simulator Session, which is sponsored by Air Atlantic Adventure, Based in Shannon.

.

Oh and by the way,

Safe Flying,

We hope to see you soon.

**Waterford Aero Club**